

Schottky Dual Diode

MBRF1550CT

50V / 15A

DATASHEET

from

www.web-bcs.com

OEM – General Semiconductor

Source: General Semiconductor Databook 1998

NEW PRODUCT

NEW PRODUCT

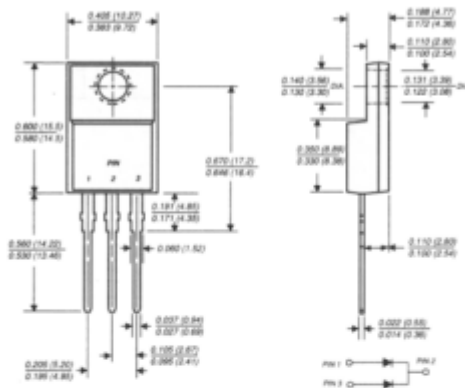
NEW PRODUCT

MBRF1535CT THRU MBRF1560CT

SCHOTTKY RECTIFIER

Reverse Voltage - 35 to 60 Volts Forward Current - 15.0 Amperes

ITO-220AB



Dimensions in inches and (millimeters)

FEATURES

- ◆ Plastic package has Underwriters Laboratory Flammability Classifications 94V-0
- ◆ Metal silicon junction, majority carrier conduction
- ◆ Low power loss, high efficiency
- ◆ High current capability, low forward voltage drop
- ◆ High surge capability
- ◆ For use in low voltage, high frequency inverters, free wheeling, and polarity protection applications
- ◆ Dual rectifier construction, positive center tap
- ◆ Guardring for transient protection
- ◆ High temperature soldering guaranteed: 250°C/10 seconds, 0.25" (6.35mm) from case



MECHANICAL DATA

Case: ITO-220AB molded plastic body
Terminals: Leads solderable per MIL-STD-750, Method 2026
Polarity: As marked
Mounting Position: Any
Mounting Torque: 5 in. - lbs. max.
Weight: 0.08 ounces, 2.24 gram

MAXIMUM RATINGS AND ELECTRICAL CHARACTERISTICS

Ratings at 25°C ambient temperature unless otherwise specified.

	SYMBOLS	MBRF1535CT	MBRF1545CT	MBRF1550CT	MBRF1560CT	UNITS
Maximum repetitive peak reverse voltage	VRRM	35	45	50	60	Volts
Maximum working peak reverse voltage	VRWM	35	45	50	60	Volts
Maximum DC blocking voltage	VDC	35	45	50	60	Volts
Maximum average forward rectified current at TC=105°C	IAV	15.0				Amps
Peak repetitive forward current at TC=105°C per diode (rated VR, 20KHz sq.wave)	IFRM	15.0				Amps
Peak forward surge current 8.3ms single half sine-wave superimposed on rated load (JEDEC method)	IFSM	150.0				Amps
Peak repetitive reverse surge current (NOTE 1)	IRRM	1.0		0.5		Amps
Maximum instantaneous forward voltage per leg at (NOTE 2)	VF	IF=7.5A, TC=25°C IF=7.5A, TC=125°C IF=15A, TC=25°C IF=15A, TC=125°C		0.75 0.65 — —		Volts
Maximum instantaneous reverse current at rated DC blocking voltage per leg (NOTE 2) TC=125°C	IR	0.1 15.0		1.0 50.0		mA
Voltage rate of change, (rated VR)	dv/dt	10,000				V/μs
Maximum thermal resistance per leg (NOTE 3)	RθJC	5.0				°C/W
Operating junction temperature range	TJ	-65 to +150				°C
Storage temperature range	TSTG	-65 to +175				°C

NOTES: (1) 2.0μs pulse width, f=1.0 KHz
 (2) 300μs, pulse width, 1% duty cycle
 (3) Thermal resistance from junction to case

RATINGS AND CHARACTERISTIC CURVES MBRF1535CT THRU MBRF1560CT

