

Schottky Dual Diode

SBLF25L30CT

30V / 25A

DATASHEET

from

www.web-bcs.com

OEM – General Semiconductor

Source: General Semiconductor Databook 1998

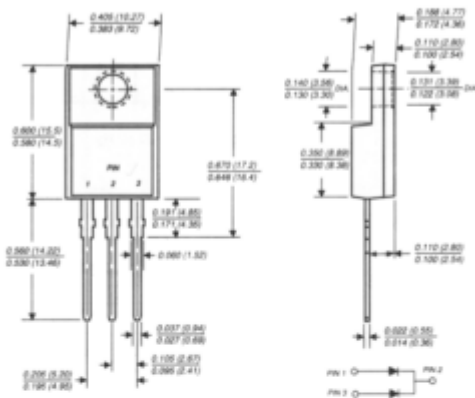
NEW PRODUCT NEW PRODUCT NEW PRODUCT

SBLF25L20CT THRU SBLF25L30CT

LOW V_F SCHOTTKY RECTIFIER

Reverse Voltage - 20 and 25 Volts Forward Current - 25.0 Amperes

ITO-220AB



Dimensions in inches and (millimeters)

FEATURES

- ◆ Plastic package has Underwriters Laboratory Flammability Classification 94V-0
- ◆ Metal silicon junction, majority carrier conduction
- ◆ Low power loss, high efficiency
- ◆ High current capability
- ◆ Very low forward voltage drop
- ◆ High surge capability
- ◆ Guardring for overvoltage protection
- ◆ For use in low voltage, high frequency inverters, free wheeling, and polarity protection applications
- ◆ High temperature soldering guaranteed: 250°C/10 seconds, 0.16" (4.06mm) from case



MECHANICAL DATA

Case: JEDEC ITO-220AB molded plastic
Terminals: Leads solderable per MIL-STD-750, Method 2026
Polarity: As marked
Mounting Position: Any
Weight: 0.08 ounce, 2.24 grams
Mounting Torque: 5in.-lbs. max.

MAXIMUM RATINGS AND ELECTRICAL CHARACTERISTICS

Ratings at 25°C ambient temperature unless otherwise specified.

	SYMBOLS	SBLF25L20CT	SBLF25L25CT	SBLF25L30CT	UNITS
Maximum repetitive peak reverse voltage	V _{RRM}	20	25	30	Volts
Maximum RMS voltage	V _{RMS}	14	17	21	Volts
Maximum DC blocking voltage	V _{DC}	20	25	30	Volts
Maximum average forward rectified current at T _C =95°C	I _{F(AV)}	25.0			Amps
Peak forward surge current, 8.3ms single half sine-wave superimposed on rated load (JEDEC Method)	I _{FSM}	180.0			Amps
Maximum instantaneous forward voltage per leg at 12.5A (NOTE 1) T _C =125°C T _C =25°C	V _F	0.39 0.49			Volts
Maximum instantaneous reverse current at rated DC blocking voltage per leg (NOTE 1) T _C =25°C T _C =100°C T _C =125°C	I _R	1.0 50.0 100.0			mA
Typical thermal resistance per leg (NOTE 2)	R _{θJC}	4.0			°C/W
Operating junction and storage temperature range	T _J , T _{STG}	-40 to +125			°C

NOTES:

- (1) Pulse test: 300µs pulse width, 1% duty cycle
- (2) Thermal resistance from junction to case per leg

RATINGS AND CHARACTERISTIC CURVES SBLF25L20CT THRU SBLF25L30CT

