

# Bridge Rectifier

## **GBU6K**

800V / 6A

# DATASHEET

from

[www.web-bcs.com](http://www.web-bcs.com)

OEM – General Semiconductor

Source: General Semiconductor Databook 1998

# GBU6A THRU GBU6M

## GLASS PASSIVATED SINGLE-PHASE BRIDGE RECTIFIER

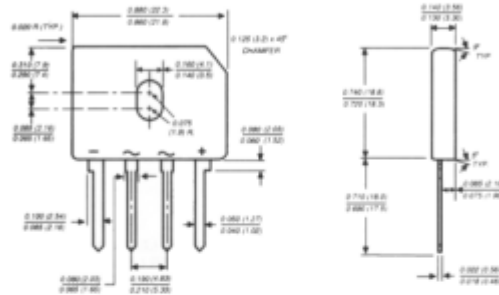
Reverse Voltage - 50 to 1000 Volts      Forward Current - 6.0 Amperes

### FEATURES

- ◆ Plastic package has Underwriters Laboratory Flammability Classification 94V-0
- ◆ This series is UL listed under the Recognized Component Index, file number E54214
- ◆ High case dielectric strength of 1500 VRMS
- ◆ Ideal for printed circuit boards
- ◆ Glass passivated chip junctions
- ◆ High surge overload rating
- ◆ High temperature soldering guaranteed: 260°C/10 seconds, 0.375" (9.5mm) lead length, 5lbs. (2.3kg) tension



### Case Style GBU



Polarity shown on front side of case, positive lead by beveled corner

Dimensions in inches and (millimeters)

### MECHANICAL DATA

**Case:** Molded plastic body over passivated chip

**Terminals:** Plated leads solderable per MIL-STD-750, Method 2026

**Mounting Position:** Any (NOTE 2)

**Mounting Torque:** 5 in. - lb. max.

**Weight:** 0.15 ounce, 4.0 grams

### MAXIMUM RATINGS AND ELECTRICAL CHARACTERISTICS

Ratings at 25°C ambient temperature unless otherwise specified.

	SYMBOLS	GBU 6A	GBU 6B	GBU 6D	GBU 6G	GBU 6J	GBU 6K	GBU 6M	UNITS
Maximum repetitive peak reverse voltage	VRRM	50	100	200	400	600	800	1000	Volts
Maximum RMS Voltage	VRMS	35	70	140	280	420	560	700	Volts
Maximum DC blocking voltage	VDC	50	100	200	400	600	800	1000	Volts
Maximum average forward rectified output current at TC=100°C (NOTE 1, 2)	I(AV)	6.0							Amps
Peak forward surge current single sine-wave superimposed on rated load (JEDEC Method) TJ=150°C	IFSM	175.0							Amps
Rating for fusing (I<8.3ms)	IFt	127.0							A'sec
Maximum instantaneous forward voltage drop per leg at 6.0A	VF	1.0							Volts
Maximum DC reverse current at rated DC blocking voltage per leg	IR	5.0 500.0							µA
Typical junction capacitance per leg (NOTE 3)	CJ	211.0				94.0			pF
Typical thermal resistance per leg (NOTE 1, 2)	REJA REJC	7.4 2.2							°C/W
Operating junction and storage temperature range	TJ, TSTG	-55 to +150							°C

**NOTES:**

- (1) Units case mounted on 2.6 x 1.4 x 0.06" thick (6.5 x 3.5 x 0.15 cm) Al. Plate heatsink
- (2) Recommended mounting position is to bolt down on heatsink with silicone thermal compound for maximum heat transfer with #6 screws
- (3) Measured at 1.0 MHz and applied reverse voltage of 4.0 Volts

**RATINGS AND CHARACTERISTICS CURVES GBU6A THRU GBU6M**

